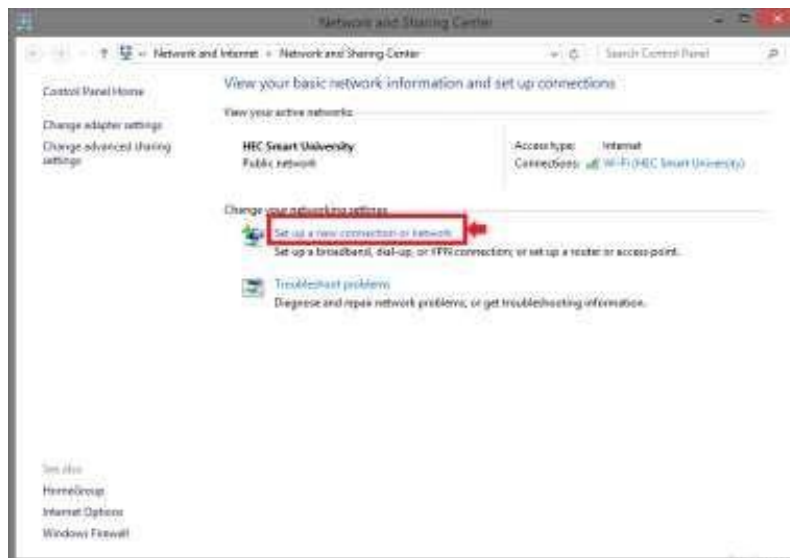


## Windows 8.1 Configuration of PUMHSW Smart University Connectivity Manual

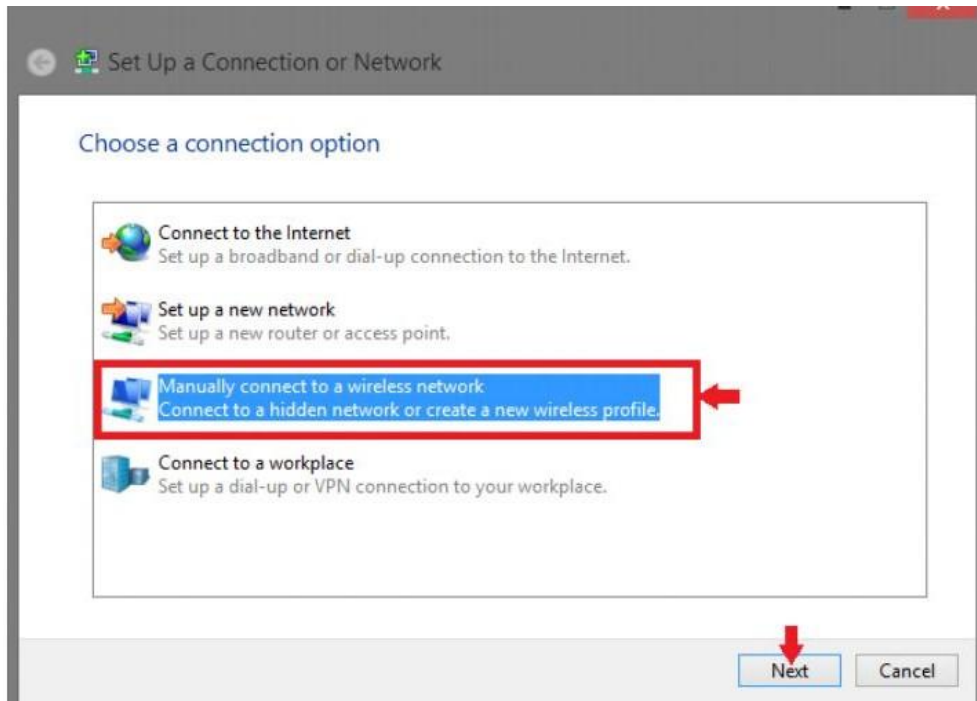
### 1. Open 'Network and Sharing Center'



### 2. Go to 'Set up a new connection or network'



3. Choose 'Manually connect to a wireless network'



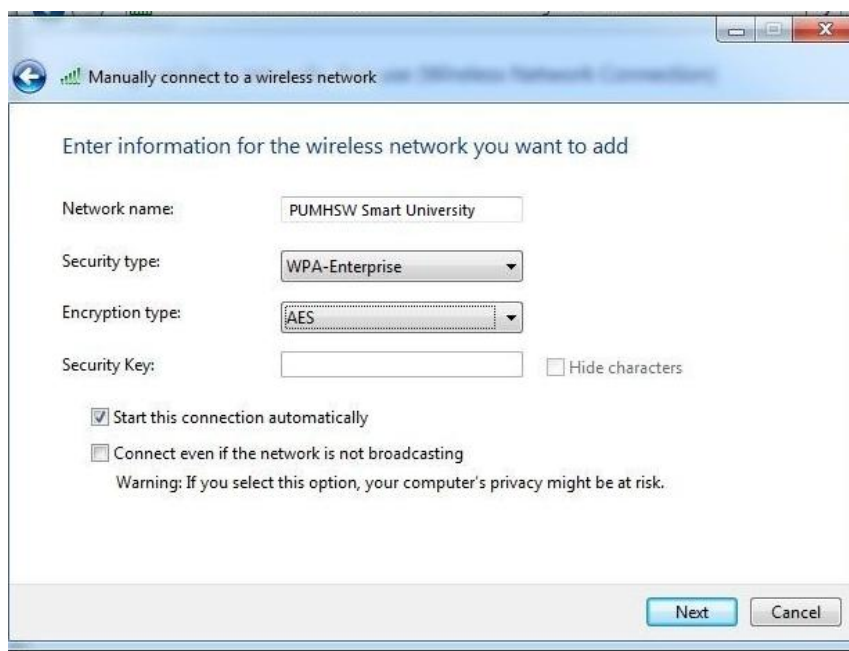
4. On network name write "PUMHSW Smart University"

Security type 'WPA2-Enterprise'

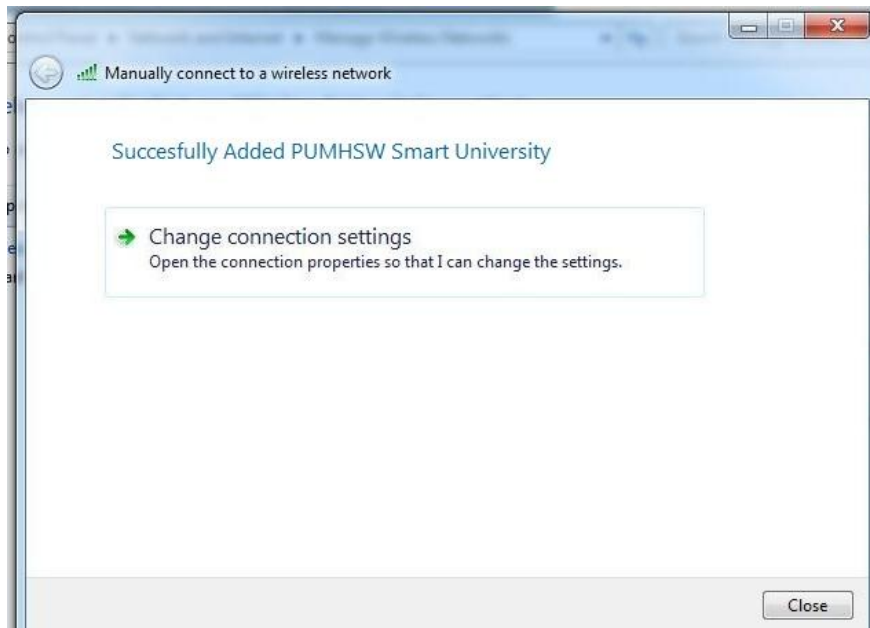
Encryption Type 'AES' Leave

Security Key 'Blank' Click on

'Next'



## 5. Go to 'Change Connection Setting'



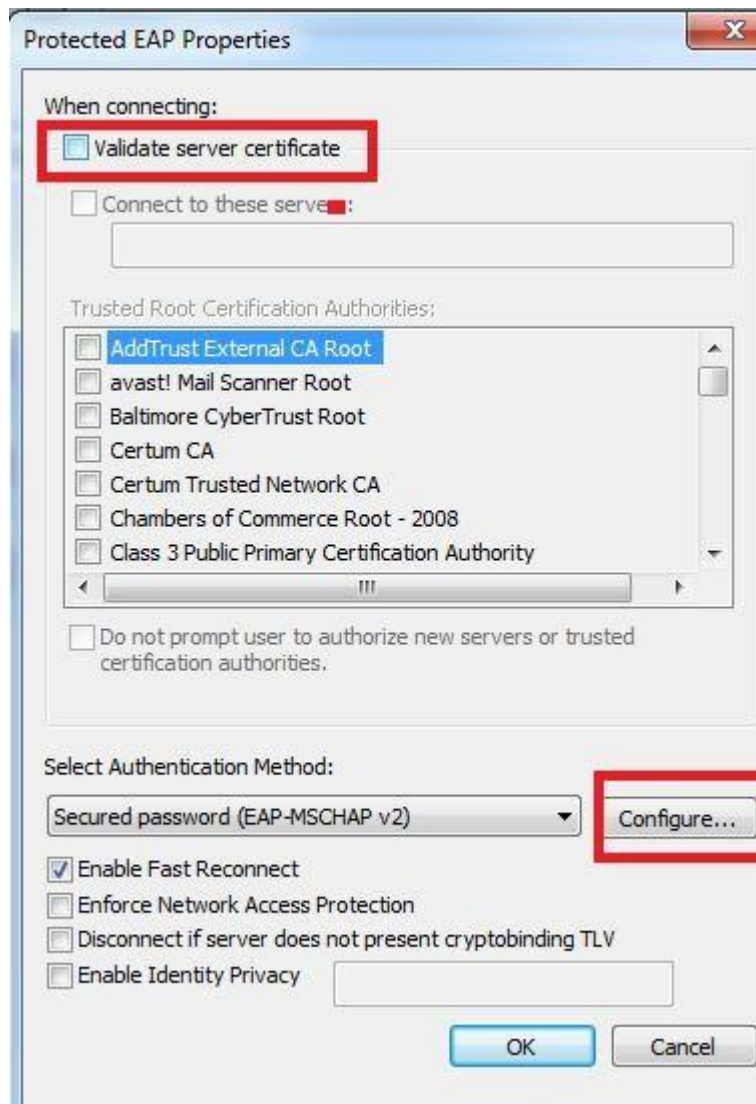
## 6. Select Security Type 'WPA2-Enterprise'

Encryption Type 'AES'

Network Authentication Method: Microsoft: Protected EAP (PEAP) and then click setting



**7. Uncheck 'Validate server certificate'  
Click on 'Configure'**



**8. Uncheck Automatically use my windows logon name and password (and domain if any) press OK**



## 9. Forget / Disconnect or Reconnect with PUMHSW Smart University

## 10. Provide Your Institutional Username and Password



Enter your user name and password

User name

Password

OK Cancel